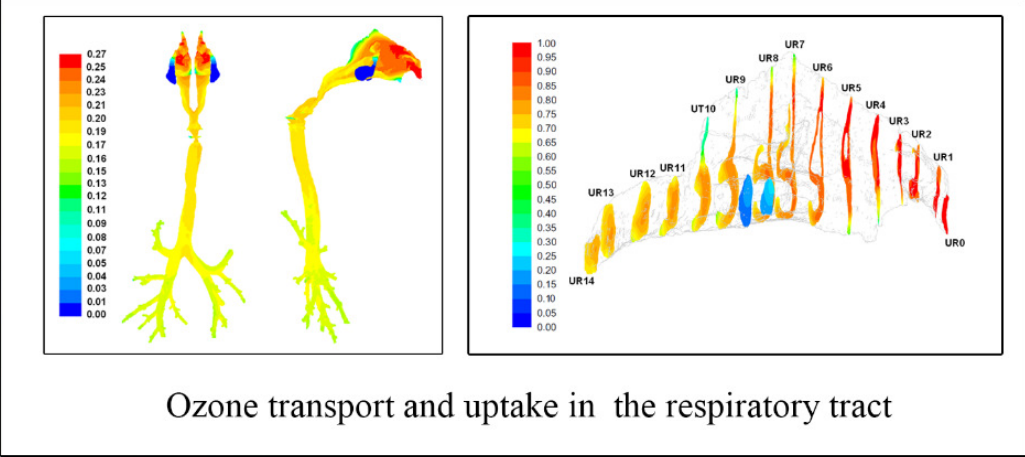
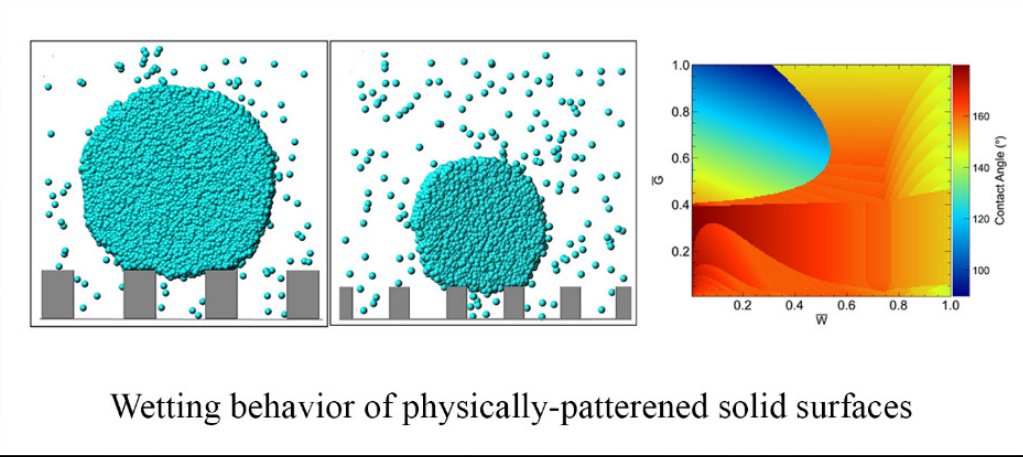




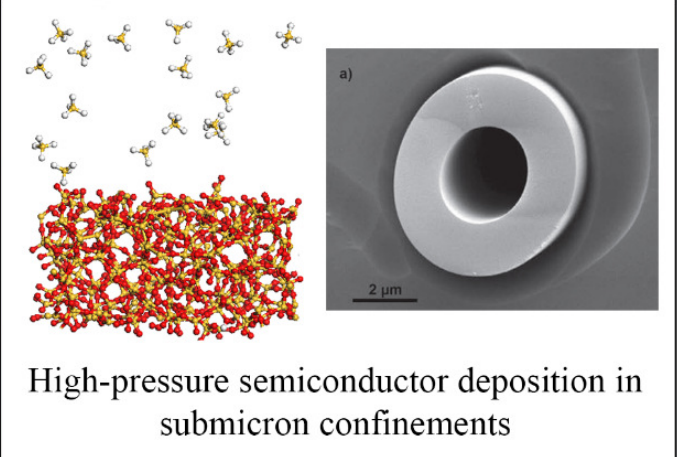
Transport phenomena, capillary and wetting phenomena, interfacial and multi-phase flows, complex fluids



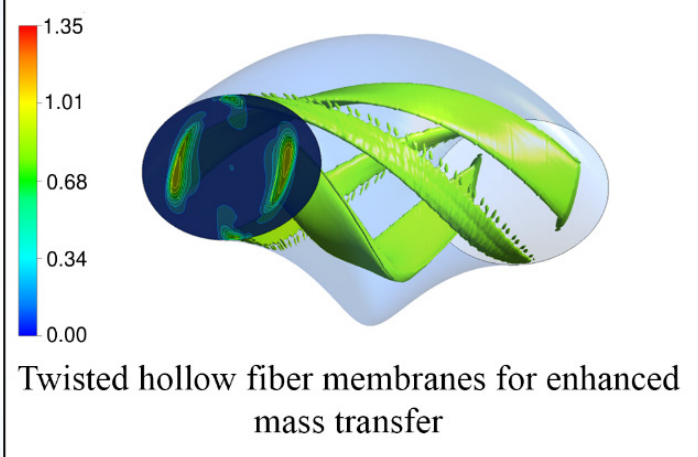
Ozone transport and uptake in the respiratory tract



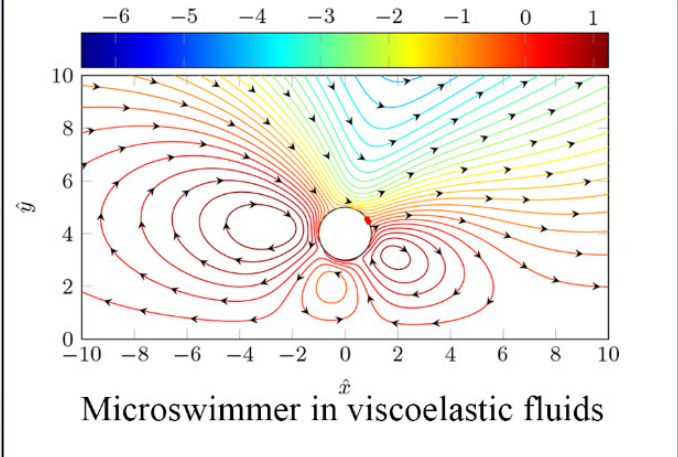
Wetting behavior of physically-patterned solid surfaces



High-pressure semiconductor deposition in submicron confinements



Twisted hollow fiber membranes for enhanced mass transfer



Microswimmer in viscoelastic fluids